

Регистраторы данных DELTA OHM серии LR35

Технические характеристики



IoT DATA LOGGERS FOR LoRaWAN® NETWORKS

LR35...SERIES



Архангельск (8182)63-90-72
Астана (7172)727-132
Астрахань (8512)99-46-04
Барнаул (3852)73-04-60
Белгород (4722)40-23-64
Брянск (4832)59-03-52
Владивосток (423)249-28-31
Волгоград (844)278-03-48
Вологда (8172)26-41-59
Воронеж (473)204-51-73
Екатеринбург (343)384-55-89
Иваново (4932)77-34-06

Ижевск (3412)26-03-58
Иркутск (395)279-98-46
Казань (843)206-01-48
Калининград (4012)72-03-81
Калуга (4842)92-23-67
Кемерово (3842)65-04-62
Киров (8332)68-02-04
Краснодар (861)203-40-90
Красноярск (391)204-63-61
Курск (4712)77-13-04
Липецк (4742)52-20-81
Киргизия (996)312-96-26-47

Магнитогорск (3519)55-03-13
Москва (495)268-04-70
Мурманск (8152)59-64-93
Набережные Челны (8552)20-53-41
Нижний Новгород (831)429-08-12
Новокузнецк (3843)20-46-81
Новосибирск (383)227-86-73
Омск (3812)21-46-40
Орел (4862)44-53-42
Оренбург (3532)37-68-04
Пенза (8412)22-31-16
Казахстан (772)734-952-31

Пермь (342)205-81-47
Ростов-на-Дону (863)308-18-15
Рязань (4912)46-61-64
Самара (846)206-03-16
Санкт-Петербург (812)309-46-40
Саратов (845)249-38-78
Севастополь (8692)22-31-93
Симферополь (3652)67-13-56
Смоленск (4812)29-41-54
Сочи (862)225-72-31
Ставрополь (8652)20-65-13
Таджикистан (992)427-82-92-69

Сургут (3462)77-98-35
Тверь (4822)63-31-35
Томск (3822)98-41-53
Тула (4872)74-02-29
Тюмень (3452)66-21-18
Уфа (347)229-48-12
Хабаровск (4212)92-98-04
Челябинск (351)202-03-61
Череповец (8202)49-02-64
Ярославль (4852)69-52-93

Единый адрес для всех регионов: dmh@nt-rt.ru || www.deltaohm.nt-rt.ru

Data loggers for LoRaWAN® networks

LR35 series

The **Delta OHM LR35 data loggers series** use LoRaWAN® technology. This makes this system the perfect fit for situations where **Long Range transmission** is a need.

This technology works with an **ultra-low power consumption** - works up to 4 years on a battery! - and a transmission range up to several kilometers.

Different from measurement systems that are being built by using a **sensor** with direct LoRa communication, Delta OHM has chosen to use **data loggers** with LoRa communication. This means that the measurement data can be always recovered even in case of failing transmission.

This makes the LR35 series the best choice for a wide range of demanding applications.

Technical Specifications	
Frequency	Available frequencies EU868, US915, AU915. For other frequencies, please ask us for support.
Antenna	Internal antenna for indoor models. Outdoor models always supplied with external antenna.
RF Power	+14 dBm (EU), +20 dBm (US)
LoRaWAN Class	A
Activation method	OTAA (Over-The-Air-Activation) and ABP (Activation-by-Personalization)
Data encryption	AES128
Measuring intervals	1, 2, 5, 10, 15, 30 s / 1, 2, 5, 10, 15, 30, 60 min
Transmitting intervals	Starting from a minimum of 2 minutes - 2, 5, 10, 15, 30, 60 min
Alarm	Acoustic by means of the internal buzzer
Power supply	Lithium thionyl chloride (Li-SOCl ₂) not rechargeable battery 7...30 Vdc external power supply for LR35W-MB
Battery autonomy	4 years typ. for LR35WH (10 s meas. intv., 2 min transm. intv.) 1.5 years typ. for LR351NB (2 min meas. and transm. intv.) 2 years typical for the other models (5 s meas. intv., 10 s for LR35H, 2 min transm. intv.)
Operating conditions	-20...+70 °C / 0...85 %RH not condensing for indoor models (except LR351NB) -10...+70 °C / 0...85 %RH not condensing for LR351NB -20...+70 °C / 0...100 %RH for outdoor models
Protection degree	IP 67 for outdoor models

Applications

There are numerous applications where the LR35 loggers provide a great solution. Perfect for measurements where it is important to be independent from external power and where high speed transmission is not necessary.

- ✓ Smart cities, smart building, air quality
- ✓ Agriculture, solar, soil
- ✓ Environmental conditions
- ✓ Food or medicine storage, production, transport
- ✓ Solar farms, solar power, sunshine conditions



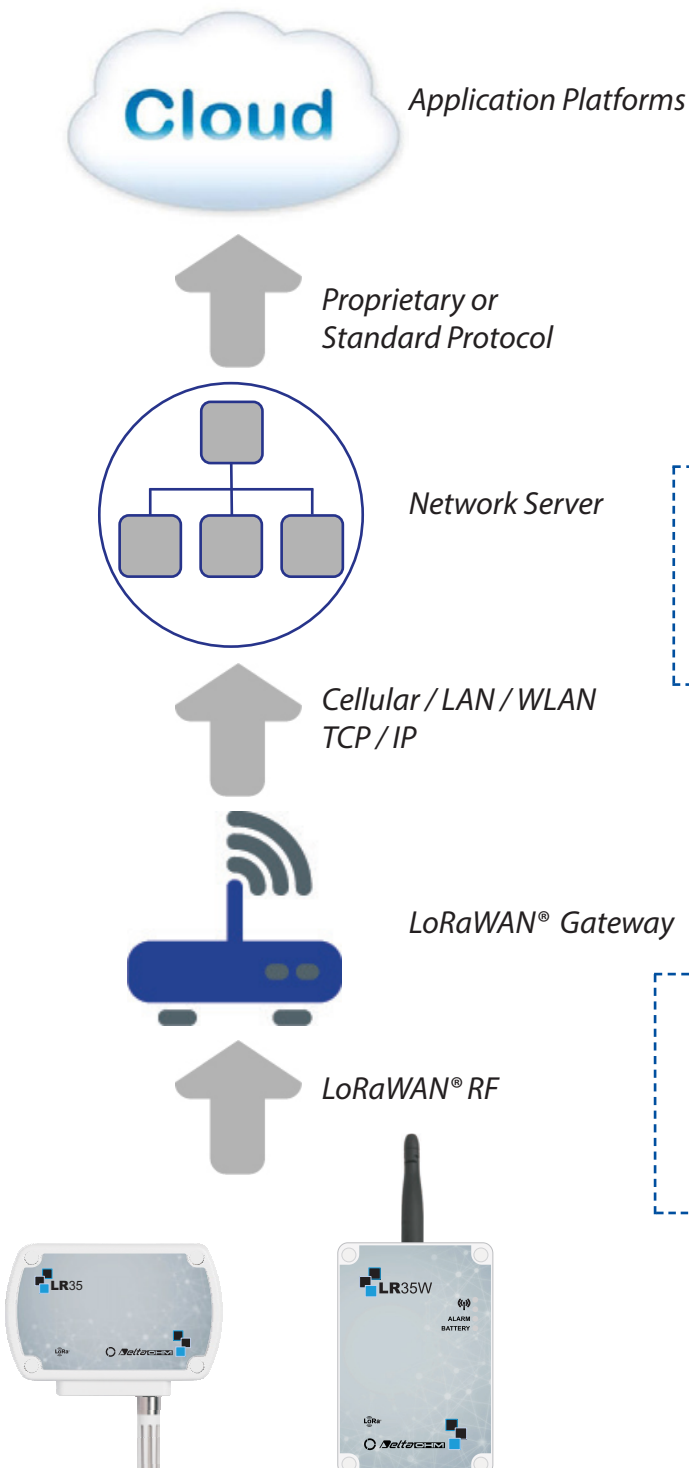
Architecture of the system

Delta OHM provides a **wide range of loggers** with sensors for all general measurement conditions like temperature, humidity, differential pressure, CO₂, PM.

For **outside conditions** we have specific IP67 loggers with connections to pyranometers, rain gauges and soil moisture.

But also we connect **any other third party measurement** with LoRa as long as it has a standard output: 4-20mA, 0-10V, Modbus-RTU.

HOW does the system work?



In those areas where **LoRa coverage** is available, the loggers can be connected to a (free) public gateway.

Or you can use your own commercial available gateway to connect through WiFi, Ethernet, 3G or 4G.







When the use of a private gateway is preferred, Delta OHM can advise several types and brands to work with.

Loggers of the LR35 series are preconfigured to send data to the free-to-use network server **"The Things Network"**

The data sent by the sensors are visible through a third-party **Cloud application** or the Delta OHM

For developers, the proprietary protocol (payload) which allows for the development of customized applications is available.

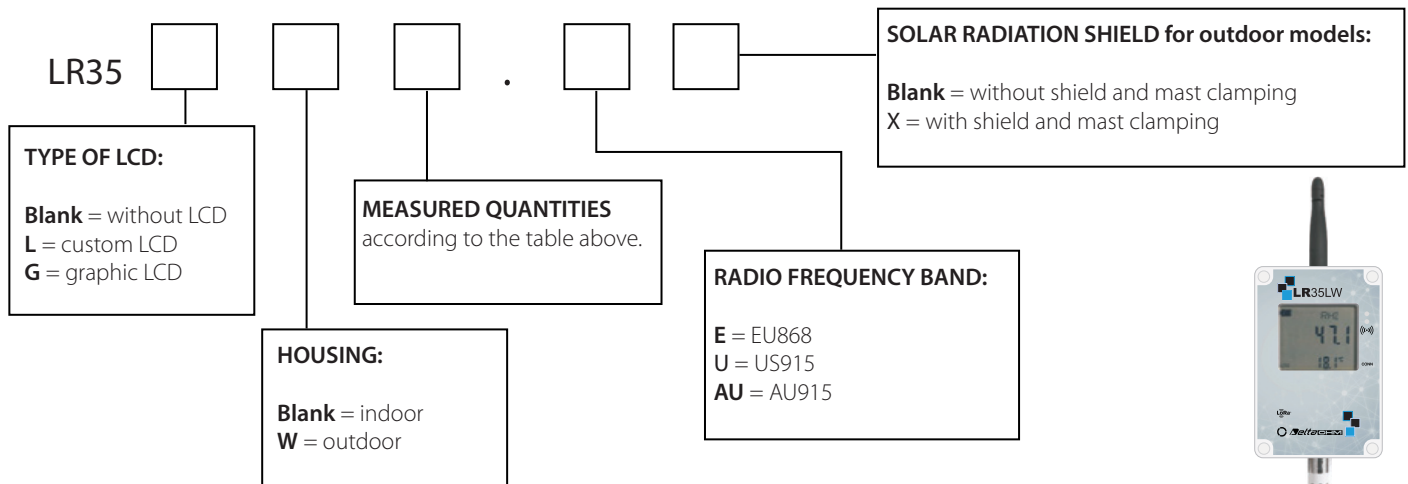
Available models

Model	MEASURES						VERSION		LCD (optional)	
							Indoor	Outdoor	Custom	Graphic
	TEMP.	R.H.	ΔP	CO ₂ / PM	SOLAR	RAIN				
LR35[W]1NTC <i>probe with cable</i>	NTC	•					•	W	L	
LR35[W]1NTV <i>integrated probe</i>	NTC	•					•	W	L	
LR357P/xTC <i>x = 1 or 3 inputs</i>	Pt100 Pt1000	•					•			G
LR351N4r1ZTV	NTC	•	•				•		L	
LR354r1Z			•				•		L	
LR351NB				CO ₂			•			G
LR35WPM				PM				W	L	
LR35WPTC						•		W	L	
LR35WRTC					•			W	L	
LR35WS/xTC <i>x = 1 or 3 inputs</i>	Temperature and soil VWC							W	L	
LR35WDPTC			Level ^(*)			•		W	L	
LR35[W]H	Analog inputs (3 for LR35H, 4 for LR35WH)						•	W	L Outdoor	G Indoor
LR35W/MB	RS485 Modbus-RTU input Voltage-free contact input							W	L	

(*) Use sensor HP712

- Other models can be available on request.

Ordering codes



The external probes have to be ordered separately

Example of ordering code for T/RH outdoor model with LCD display and integrated probe - Europe RF - LR35LW1NTV.E

Архангельск (8182)63-90-72	Ижевск (3412)26-03-58	Магнитогорск (3519)55-03-13	Пермь (342)205-81-47	Сургут (3462)77-98-35
Астана (7172)727-132	Иркутск (395)279-98-46	Москва (495)268-04-70	Ростов-на-Дону (863)308-18-15	Тверь (4822)63-31-35
Астрахань (8512)99-46-04	Казань (843)206-01-48	Мурманск (8152)59-64-93	Рязань (4912)46-61-64	Томск (3822)98-41-53
Барнаул (3852)73-04-60	Калининград (4012)72-03-81	Набережные Челны (8552)20-53-41	Самара (846)206-03-16	Тула (4872)74-02-29
Белгород (4722)40-23-64	Калуга (4842)92-23-67	Нижний Новгород (831)429-08-12	Санкт-Петербург (812)309-46-40	Тюмень (3452)66-21-18
Брянск (4832)59-03-52	Кемерово (3842)65-04-62	Новокузнецк (3843)20-46-81	Саратов (845)249-38-78	Ульяновск (8422)24-23-59
Владивосток (423)249-28-31	Киров (8332)68-02-04	Новосибирск (383)227-86-73	Севастополь (8692)22-31-93	Уфа (347)229-48-12
Волгоград (844)278-03-48	Краснодар (861)203-40-90	Омск (3812)21-46-40	Симферополь (3652)67-13-56	Хабаровск (4212)92-98-04
Вологда (8172)26-41-59	Красноярск (391)204-63-61	Орел (4862)44-53-42	Смоленск (4812)29-41-54	Челябинск (351)202-03-61
Воронеж (473)204-51-73	Курск (4712)77-13-04	Оренбург (3532)37-68-04	Сочи (862)225-72-31	Череповец (8202)49-02-64
Екатеринбург (343)384-55-89	Липецк (4742)52-20-81	Пенза (8412)22-31-16	Ставрополь (8652)20-65-13	Ярославль (4852)69-52-93
Иваново (4932)77-34-06	Киргизия (996)312-96-26-47	Казахстан (772)734-952-31	Таджикистан (992)427-82-92-69	

Единый адрес для всех регионов: dmh@nt-rt.ru || www.deltaohm.nt-rt.ru