

Пиранометры DELTA OHM LPPYRA02

Технические характеристики

Архангельск (8182)63-90-72
Астана (7172)727-132
Астрахань (8512)99-46-04
Барнаул (3852)73-04-60
Белгород (4722)40-23-64
Брянск (4832)59-03-52
Владивосток (423)249-28-31
Волгоград (844)278-03-48
Вологда (8172)26-41-59
Воронеж (473)204-51-73
Екатеринбург (343)384-55-89
Иваново (4932)77-34-06

Ижевск (3412)26-03-58
Иркутск (395)279-98-46
Казань (843)206-01-48
Калининград (4012)72-03-81
Калуга (4842)92-23-67
Кемерово (3842)65-04-62
Киров (8332)68-02-04
Краснодар (861)203-40-90
Красноярск (391)204-63-61
Курск (4712)77-13-04
Липецк (4742)52-20-81
Киргизия (996)312-96-26-47

Магнитогорск (3519)55-03-13
Москва (495)268-04-70
Мурманск (8152)59-64-93
Набережные Челны (8552)20-53-41
Нижний Новгород (831)429-08-12
Новокузнецк (3843)20-46-81
Новосибирск (383)227-86-73
Омск (3812)21-46-40
Орел (4862)44-53-42
Оренбург (3532)37-68-04
Пенза (8412)22-31-16
Казахстан (772)734-952-31

Пермь (342)205-81-47
Ростов-на-Дону (863)308-18-15
Рязань (4912)46-61-64
Самара (846)206-03-16
Санкт-Петербург (812)309-46-40
Саратов (845)249-38-78
Севастополь (8692)22-31-93
Симферополь (3652)67-13-56
Смоленск (4812)29-41-54
Сочи (862)225-72-31
Ставрополь (8652)20-65-13
Таджикистан (992)427-82-92-69

Сургут (3462)77-98-35
Тверь (4822)63-31-35
Томск (3822)98-41-53
Тула (4872)74-02-29
Тюмень (3452)66-21-18
Ульяновск (8422)24-23-59
Уфа (347)229-48-12
Хабаровск (4212)92-98-04
Челябинск (351)202-03-61
Череповец (8202)49-02-64
Ярославль (4852)69-52-93

Единый адрес для всех регионов: dmh@nt-rt.ru || www.deltaohm.nt-rt.ru

Spectrally Flat Class B Pyranometer

LPPYRA02

○ ACCORDING TO THE STANDARD

Follows recommendations of the WMO
fully compliant with ISO 9060:2018

○ GREAT FLEXIBILITY

Wide availability of standard output signals
for **easy integration** in any installation

○ EASY TO SET UP AND QUICK TO INSTALL

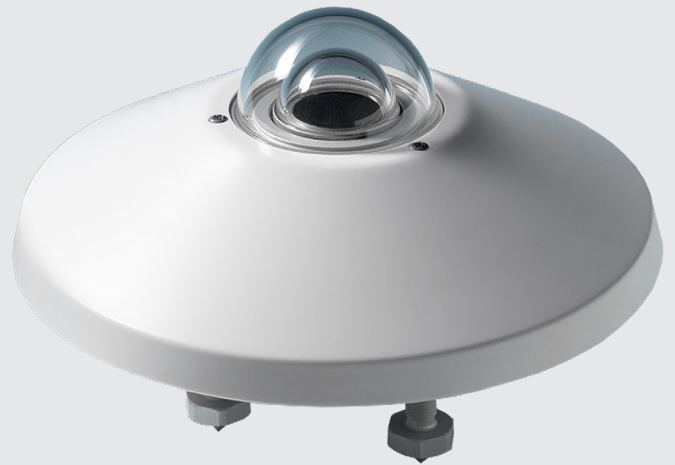
Rugged housing with low temperature response
Integrated **levelling device** for perfect positioning

○ ACCURATE AND RELIABLE SYSTEM

High reliability - extended warranties
Individual Calibration Reports for each instrument

○ HIGH IMMUNITY AGAINST INTERFERENCE

Protected against overpower and **fully electrically isolated** from any mounting surface



Main Applications

PV monitoring
Solar energy
Meteorology
Agriculture

Measuring solar efficiency – highly accurate

The **LPPYRA02** series has been designed to provide a very highly **stable and accurate** solution for measuring solar and to be used for research studies.

The pyranometers in this series are all based on the **thermopile principle, very precise**. This principle provides a μV signal without the need of an external power supply. To be able to transfer the signal over a longer distance and to prevent interference, mostly types are equipped with an integrated transmitter. When using a 4-20 mA, 0-10 VDC or RS485 Modbus-RTU output, an external active power supply is necessary. The output of these series is always related to W/m^2 .

All our pyranometers are made in a way that the electrical system is totally isolated from the housing, making it possible to mount the pyranometer on any surface, including metal ones, without the need of isolation.

Delta OHM is one of the main pyranometer producers worldwide. We produce a full range of pyranometers according to the **ISO 9060: 2018 - Spectrally Flat Class A, B and C**.

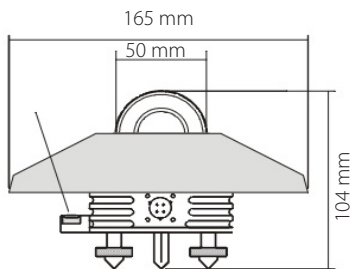
Each of our pyranometers is **calibrated separately** during production; all are supplied standard with a Report of Calibration in accordance with the ISO 9847:1992. Next to this, we are the only pyranometer producer that has invested in a full range of 6 accredited ISO 17025 Calibration Laboratories.

Pyranometers can be used **as stand-alone or in combination with our weather stations**. Delta OHM provides a full range of data loggers with integrated GSM/3G/4G modem to read and transfer measured data to any database or Cloud solution.

Technical Specifications

Sensor	Thermopile
Typical Sensitivity	$6 \div 12 \mu\text{V}/\text{Wm}^{-2}$
Impedance	$33 \div 45 \Omega$
Measuring range	$0 \div 2000 / 4000 \text{ W}/\text{m}^2$
Viewing angle	$2\pi \text{ sr}$
Spectral range (50%)	$283 \div 2800 \text{ nm}$
Operating temperature/ humidity	$-40 \div 80 \text{ }^\circ\text{C}$ $0 \div 100 \text{ \% RH}$
Output	Depending on the model: - Analog in $\mu\text{V}/\text{Wm}^{-2}$ - Analog $4 \div 20 \text{ mA}$ - Analog $0 \div 1 \text{ V}$, $0 \div 5 \text{ V}$ or $0 \div 10 \text{ V}$ - Double output: Analog $4 \div 20 \text{ mA}$ + Digital RS485 Modbus-RTU - Digital RS485 Modbus-RTU - Digital SDI-12
Power supply	$10 \div 30 \text{ Vdc}$ ($4 \div 20 \text{ mA}$ - $0 \div 1 \text{ V}$ - $0 \div 5 \text{ V}$ outputs) $15 \div 30 \text{ Vdc}$ ($0 \div 10 \text{ V}$ output) $5 \div 30 \text{ Vdc}$ (RS485 Modbus-RTU) $7 \div 30 \text{ Vdc}$ (SDI-12)
Consumption	$< 200 \mu\text{A}$ for SDI-12 version
Connection	- 4-pole M12 connector for analog output models - 8-pole M12 connector for digital and double output models
Accuracy of levelling device	$< 0.1^\circ$
Protection Degree	IP 67
MTBF	$> 10 \text{ years}$

Dimensions



LPPYRA02 is also available in the version with shadow-ring (LPPYRA12). This measures the diffuse solar radiation eliminating the contribution of direct irradiance.



ISO 9060:2018 Technical Specifications

Classification	Spectrally Flat Class B	
Response time (95%)	$< 10 \text{ s}$	
Zero offset	a) response to a $200 \text{ W}/\text{m}^2$ thermal radiation	$< \pm 10 \text{ W}/\text{m}^2$
	b) response to a 5 K/h change in ambient temperature	$< \pm 4 \text{ W}/\text{m}^2$
	c) total zero off-set including the effects a), b) and other sources	$< \pm 15 \text{ W}/\text{m}^2$
Long-term instability (1 year)	$< \pm 1 \text{ \%}$	
Non-linearity	$< \pm 1 \text{ \%}$	
Response according to the cosine law	$< \pm 18 \text{ W}/\text{m}^2$	
Spectral error	$< \pm 0.5 \text{ \%}$	
Temperature response ($-10 \dots +40^\circ\text{C}$)	$< 1.5 \text{ \%}$	
Tilt response	$< \pm 2 \text{ \%}$	

Ordering Codes

LPPYRA02	<input type="checkbox"/> <input type="checkbox"/>	Blank = $0 \dots 2000 \text{ W}/\text{m}^2$ 4 = $0 \dots 4000 \text{ W}/\text{m}^2$ Only for AC - AV - ACS models.
----------	---	--

Blank = Analog in $\mu\text{V}/\text{Wm}^{-2}$
AC = Analog $4 \div 20 \text{ mA}$
AV = Analog $0 \div 1 \text{ V}$, $0 \div 5 \text{ V}$ or $0 \div 10 \text{ V}$ (to be defined when ordering)
ACS = Analog $4 \div 20 \text{ mA}$ + digital Modbus-RTU
S = Digital RS485 Modbus-RTU
S12 = Digital SDI-12

All pyranometers are supplied with shade disk, cartridge for silica-gel crystals, 2 spare sachets, levelling device, Calibration Report.

Accessories

LPS1	Fixing bracket for mast $\text{Ø}40 \div 50 \text{ mm}$.
LPRING02	Base with levelling device and adjustable holder.
LPRING04	Adjustable holder for mounting the pyranometer a $\text{Ø}40 \text{ mm}$ mast in an inclined position.
HD2003.79K	Kit to install the pyranometer on a transverse mast.
HD2003.85K	Kit with adjustable height to mount on a $\text{Ø}40 \text{ mm}$ mast.
LPS6	Installation kit including: 750 mm mast, base fitting, graduated support plate, bracket for pyranometers.
CPM12AA4.xx	Cable for LPPYRA02 / 02AC / 02AV models. M12 connector on one end, open wires on the other end (2, 5 or 10 m).
CPM12-8D.xx	Cable for LPPYRA02S / 02S12. M12 connector on one end, open wires on the other end (2, 5 or 10 m).
CPM12-8DA.xx	Cable for LPPYRA02ACS. M12 connector on one end, open wires on the other end (2, 5 or 10 m).
CP24	PC connecting cable for the RS485 MODBUS parameters configuration (only for models with RS485 output).

Архангельск (8182)63-90-72	Ижевск (3412)26-03-58	Магнитогорск (3519)55-03-13	Пермь (342)205-81-47	Сургут (3462)77-98-35
Астана (7172)727-132	Иркутск (395)279-98-46	Москва (495)268-04-70	Ростов-на-Дону (863)308-18-15	Тверь (4822)63-31-35
Астрахань (8512)99-46-04	Казань (843)206-01-48	Мурманск (8152)59-64-93	Рязань (4912)46-61-64	Томск (3822)98-41-53
Барнаул (3852)73-04-60	Калининград (4012)72-03-81	Набережные Челны (8552)20-53-41	Самара (846)206-03-16	Тула (4872)74-02-29
Белгород (4722)40-23-64	Калуга (4842)92-23-67	Нижний Новгород (831)429-08-12	Санкт-Петербург (812)309-46-40	Тюмень (3452)66-21-18
Брянск (4832)59-03-52	Кемерово (3842)65-04-62	Новокузнецк (3843)20-46-81	Саратов (845)249-38-78	Ульяновск (8422)24-23-59
Владивосток (423)249-28-31	Киров (8332)68-02-04	Новосибирск (383)227-86-73	Севастополь (8692)22-31-93	Уфа (347)229-48-12
Волгоград (844)278-03-48	Краснодар (861)203-40-90	Омск (3812)21-46-40	Симферополь (3652)67-13-56	Хабаровск (4212)92-98-04
Вологда (8172)26-41-59	Красноярск (391)204-63-61	Орел (4862)44-53-42	Смоленск (4812)29-41-54	Челябинск (351)202-03-61
Воронеж (473)204-51-73	Курск (4712)77-13-04	Оренбург (3532)37-68-04	Сочи (862)225-72-31	Череповец (8202)49-02-64
Екатеринбург (343)384-55-89	Липецк (4742)52-20-81	Пенза (8412)22-31-16	Ставрополь (8652)20-65-13	Ярославль (4852)69-52-93
Иваново (4932)77-34-06	Киргизия (996)312-96-26-47	Казахстан (772)734-952-31	Таджикистан (992)427-82-92-69	

Единый адрес для всех регионов: dmh@nt-rt.ru || www.deltaohm.nt-rt.ru